

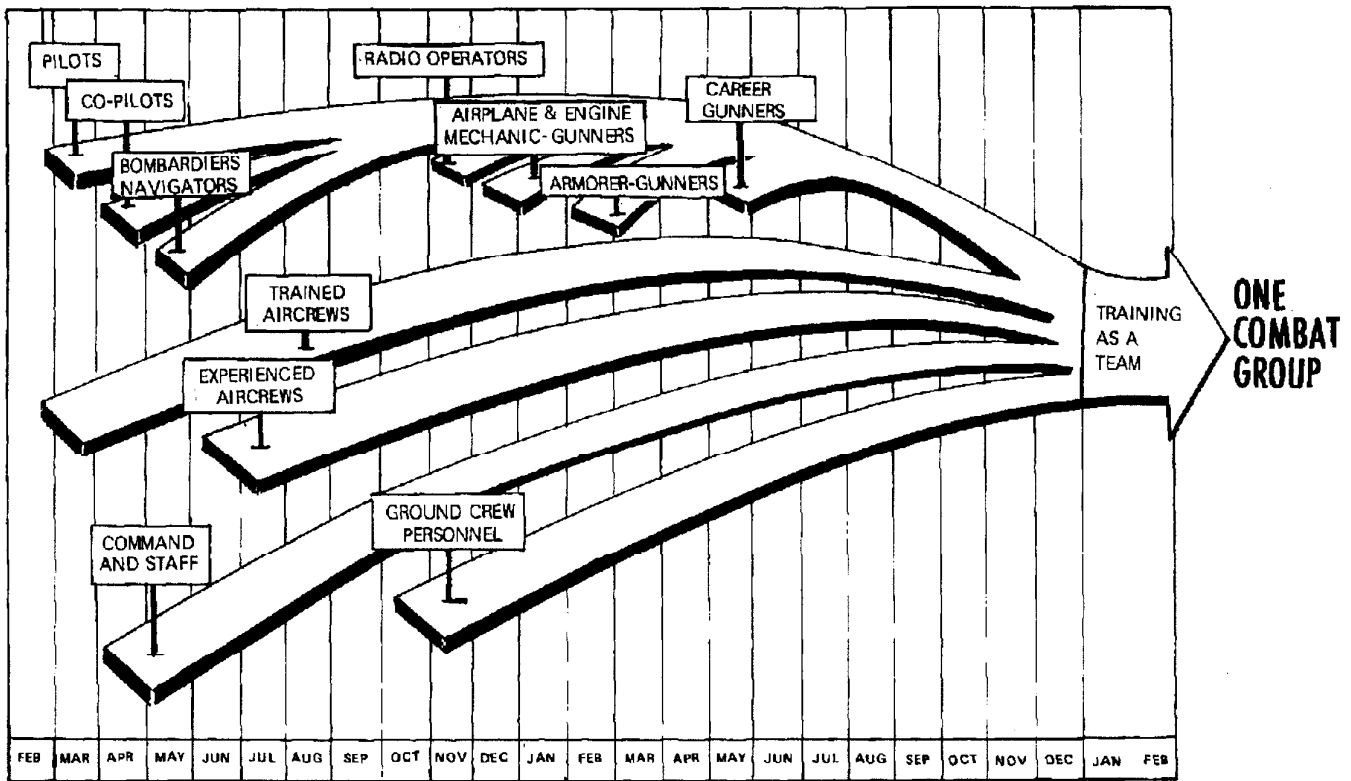
Chart Sources

1. Loss Rates. (Chart developed by author, Richard G. Davis.)
2. Training Period. (Craven and Cate, vol. 6 [Office of Air Force History, reprint edition, 1986], 602.)
3. Chain of Command Allied Expeditionary Force, April 1944. (Richard G. Davis, Carl A. Spaatz and the Air War in Europe, 1940–1945 [Washington, DC: Center for Air Force History, GPO, 1993], 242.)
4. US Strategic Air Forces in Europe, May 1944. (Richard G. Davis, Carl A. Spaatz and the Air War in Europe, 1940–1945 [Washington, DC: Center for Air Force History, GPO, 1993], 291.)
5. System of Control of Strategic Air Forces and Channels used in Determining Bombing Policy. (Richard G. Davis, Carl A. Spaatz and the Air War in Europe, 1940–1945 [Washington, DC: Center for Air Force History, GPO, 1993], 491.)
6. German Oil Production. (Richard G. Davis, Carl A. Spaatz and the Air War in Europe, 1940–1945 [Washington, DC: Center for Air Force History, GPO, 1993], 506.)
7. Mediterranean Allied Air Forces. (Craven and Cate, vol. 3 [Office of Air Force History, reprint edition, 1986], 465.)

LOSS RATES
for a force of 1,000 aircraft

Completed Missions	0.6	0.55	0.5	0.45	0.4	0.35	0.3	0.25	0.2	0.15	0.1
	1000	1000	1000	1000	1000	1000	1000	1000	1000	1000	1000
1	940	945	950	955	960	965	970	975	980	985	990
2	884	893	903	912	922	931	941	951	960	970	980
3	831	844	857	871	885	899	913	927	941	956	970
4	781	797	815	832	849	867	885	904	922	941	961
5	734	754	774	794	815	837	859	881	904	927	951
6	690	712	735	759	783	808	833	859	886	913	941
7	648	673	698	724	751	779	808	838	868	900	932
8	610	636	663	692	721	752	784	817	851	886	923
9	573	601	630	661	693	726	760	796	834	873	914
10	539	568	599	631	665	700	737	776	817	860	904
11	506	537	569	603	638	676	715	757	801	847	895
12	476	507	540	575	613	652	694	738	785	834	886
13	447	479	513	550	588	629	673	720	769	822	878
14	421	453	488	525	565	607	653	702	754	809	869
15	395	428	463	501	542	586	633	684	739	797	860
16	372	404	440	479	520	566	614	667	724	785	851
17	349	382	418	457	500	546	596	650	709	773	843
18	328	361	397	437	480	527	578	634	695	762	835
19	309	341	377	417	460	508	561	618	681	750	826
20	290	323	358	398	442	490	544	603	668	739	818
21	273	305	341	380	424	473	527	588	654	728	810
22	256	288	324	363	407	457	512	573	641	717	802
23	241	272	307	347	391	441	496	559	628	706	794
24	227	257	292	331	375	425	481	545	616	696	786
25	213	243	277	316	360	410	467	531	603	685	778 8AF
26	200	230	264	302	346	396	453	518	591	675	770
27	188	217	250	288	332	382	439	505	580	665	762
28	177	205	238	275	319	369	426	492	568	655	755
29	166	194	226	263	306	356	413	480	557	645	747
30	156	183	215	251	294	343	401	468	545	635	740 BC; 8AF
31	147	173	204	240	282	331	389	456	535	626	732
32	138	164	194	229	271	320	377	445	524	617	725
33	130	155	184	219	260	309	366	434	513	607	718
34	122	146	175	209	250	298	355	423	503	598	711
35	115	138	166	200	240	287	344	412	493	589	703 8AF
36	108	130	158	191	230	277	334	402	483	580	696
37	101	123	150	182	221	268	324	392	474	572	689
38	95	117	142	174	212	258	314	382	464	563	683
39	90	110	135	166	204	249	305	373	455	555	676
40	84	104	129	159	195	240	296	363	446	546	669
41	79	98	122	151	188	232	287	354	437	538	662
42	74	93	116	145	180	224	278	345	428	530	656
43	70	88	110	138	173	216	270	337	419	522	649
44	66	83	105	132	166	209	262	328	411	514	643
45	62	78	99	126	159	201	254	320	403	507	636
46	58	74	94	120	153	194	246	312	395	499	630
47	55	70	90	115	147	187	239	304	387	491	624
48	51	66	85	110	141	181	232	297	379	484	617
49	48	63	81	105	135	175	225	289	372	477	611
50	45	60	77	100	127	169	218	282	365	470	605 9,12,15AF

TRAINING PERIOD HEAVY BOMBARDMENT GROUP



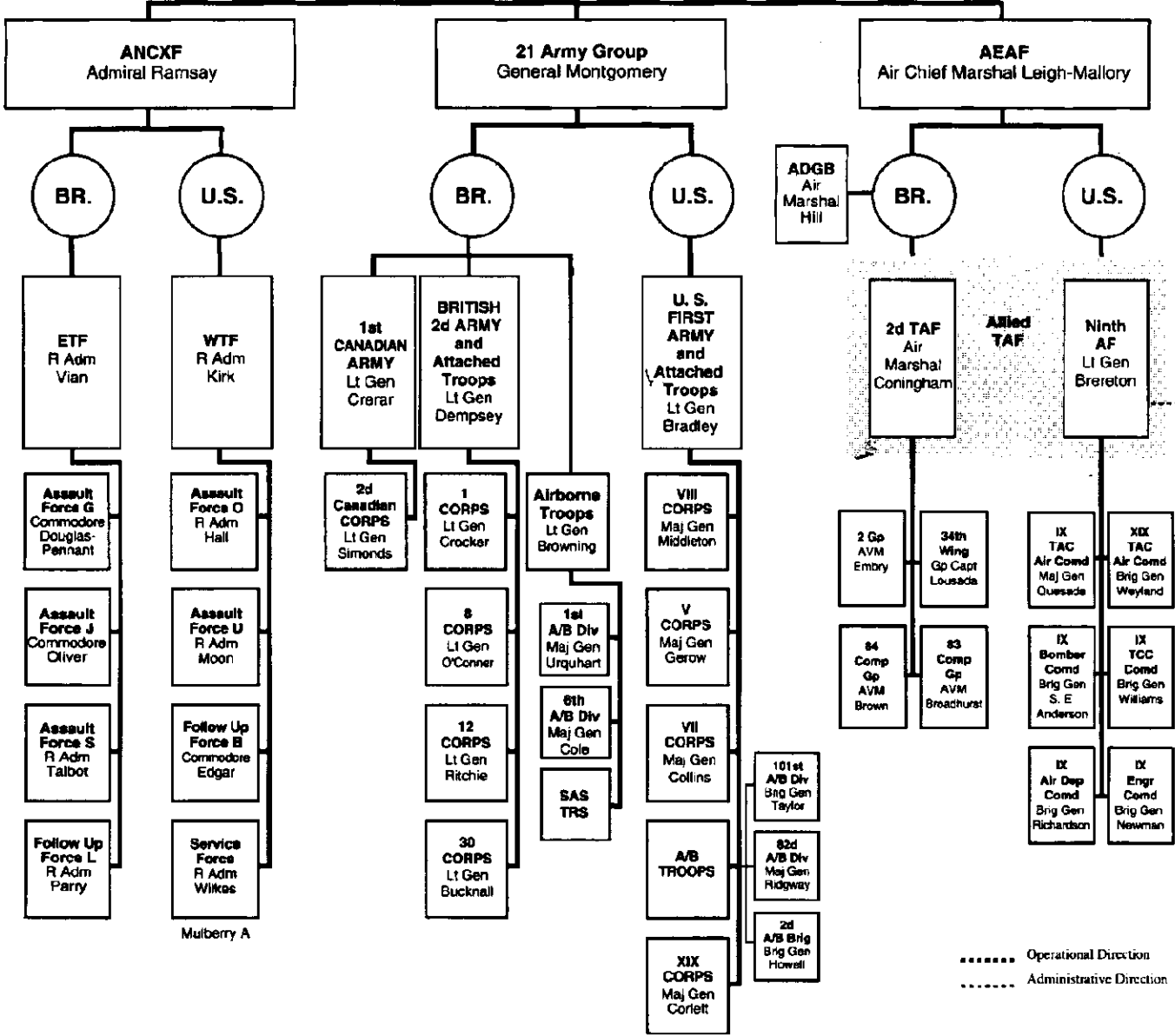
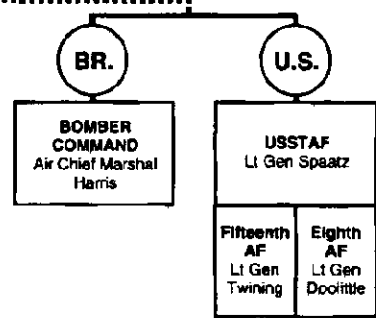
Chain of Command, Allied Expeditionary Force April 1, 1944

Air Ministry	War Office	Admiralty
Administration Logistics Support		

ETOUSA General Eisenhower	U. S. Naval Forces in Europe Admiral Stark - 12th Fleet
Administration Logistics Support	

Supreme Commander AEF
General Eisenhower

Deputy Supreme Commander AEF
Air Chief Marshal Tedder

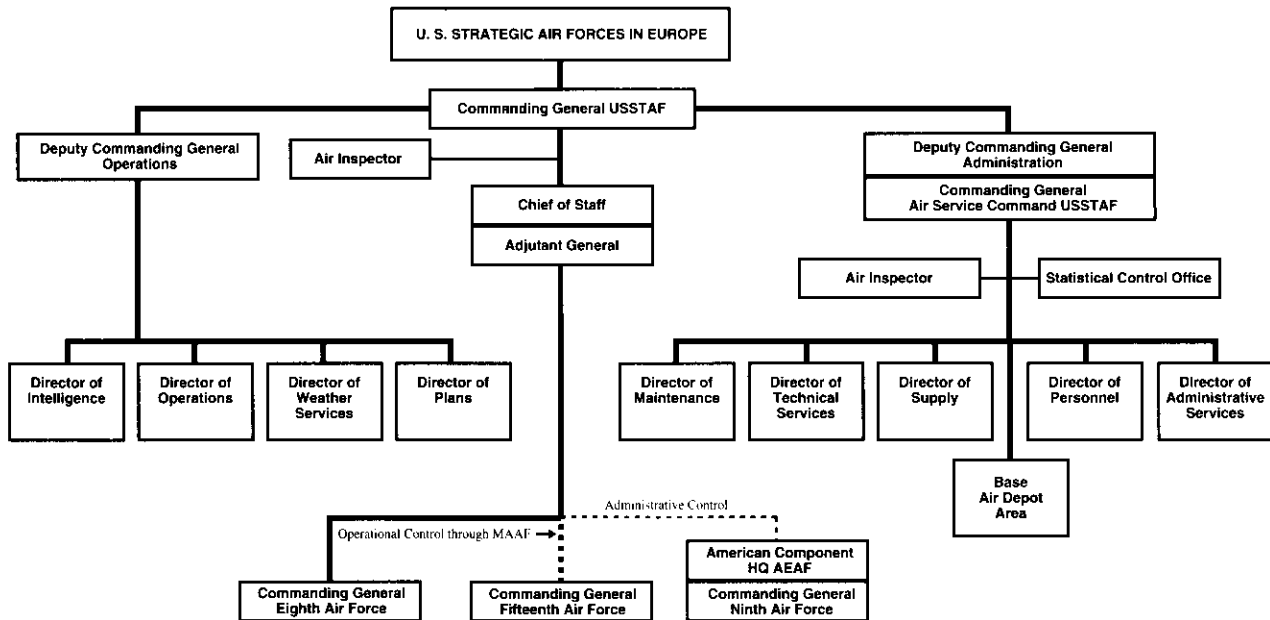


..... Operational Direction

----- Administrative Direction

U. S. Strategic Air Forces in Europe

May 1944



System of Control of Strategic Air Forces and Channels Used in Determining Bombing Policy

September 16, 1944 to May 24, 1945

